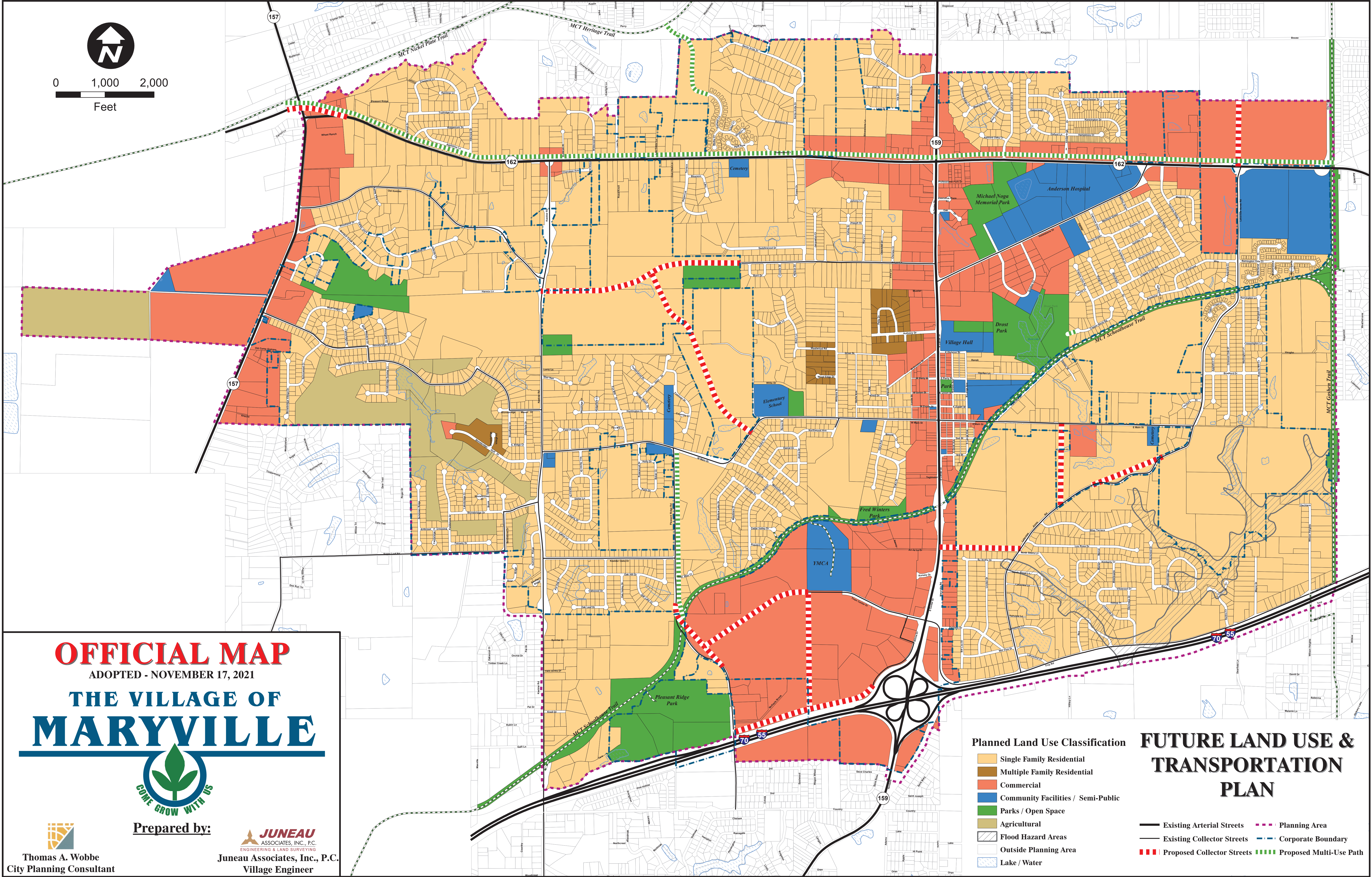




0 1,000 2,000
Feet



OFFICIAL MAP

ADOPTED - NOVEMBER 17, 2021

THE VILLAGE OF MARYVILLE












Prepared by:


Thomas A. Wobbe
City Planning Consultant


JUNEAU ASSOCIATES, INC., P.C.
ENGINEERING & LAND SURVEYING
Juneau Associates, Inc., P.C.
Village Engineer

Planned Land Use Classification

-  Single Family Residential
-  Multiple Family Residential
-  Commercial
-  Community Facilities / Semi-Public
-  Parks / Open Space
-  Agricultural
-  Flood Hazard Areas
-  Outside Planning Area
-  Lake / Water

FUTURE LAND USE & TRANSPORTATION PLAN

-  Existing Arterial Streets
-  Existing Collector Streets
-  Proposed Collector Streets
-  Planning Area
-  Corporate Boundary
-  Proposed Multi-Use Path