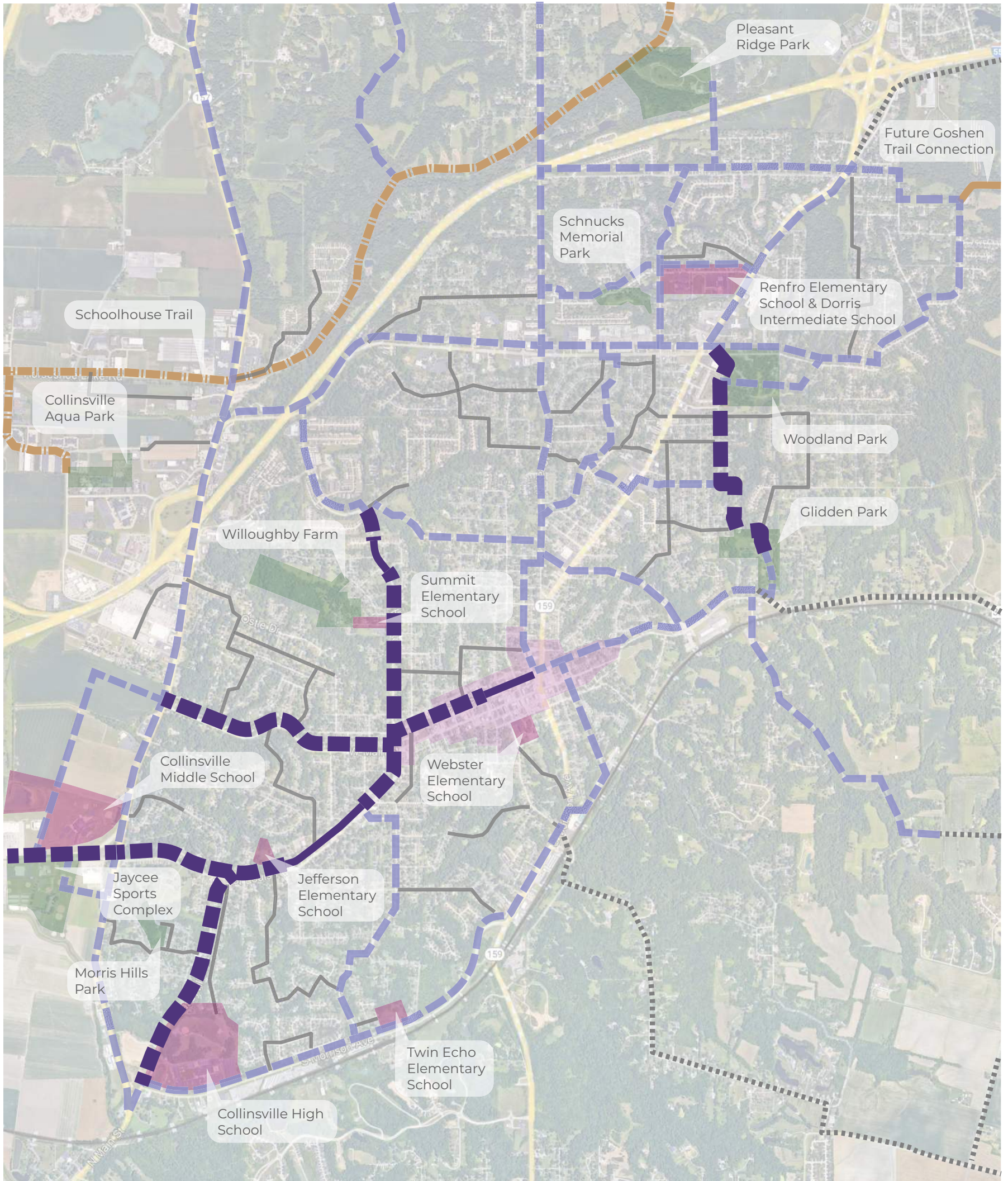


BICYCLE AND PEDESTRIAN MASTER PLAN

City of Collinsville



Purple Path



LEGEND

- | | | | |
|--|--------------------------------|--|--------------------------------|
| | IN PROGRESS PURPLE PATHS | | PROPOSED PURPLE PATHS |
| | PROPOSED PRIORITY PURPLE PATHS | | PROPOSED ON-ROAD BIKE CORRIDOR |
| | SCHOOLS | | FUTURE SIDEWALKS |
| | COLLINSVILLE PARKS | | EXISTING BICYCLE FACILITIES |
| | UPTOWN AREA | | IN PROGRESS MCT TRAIL |

0 1000 2000 4000
Feet



This study has been funded in part by the generous grants of our local partners: ACT and MEPRD